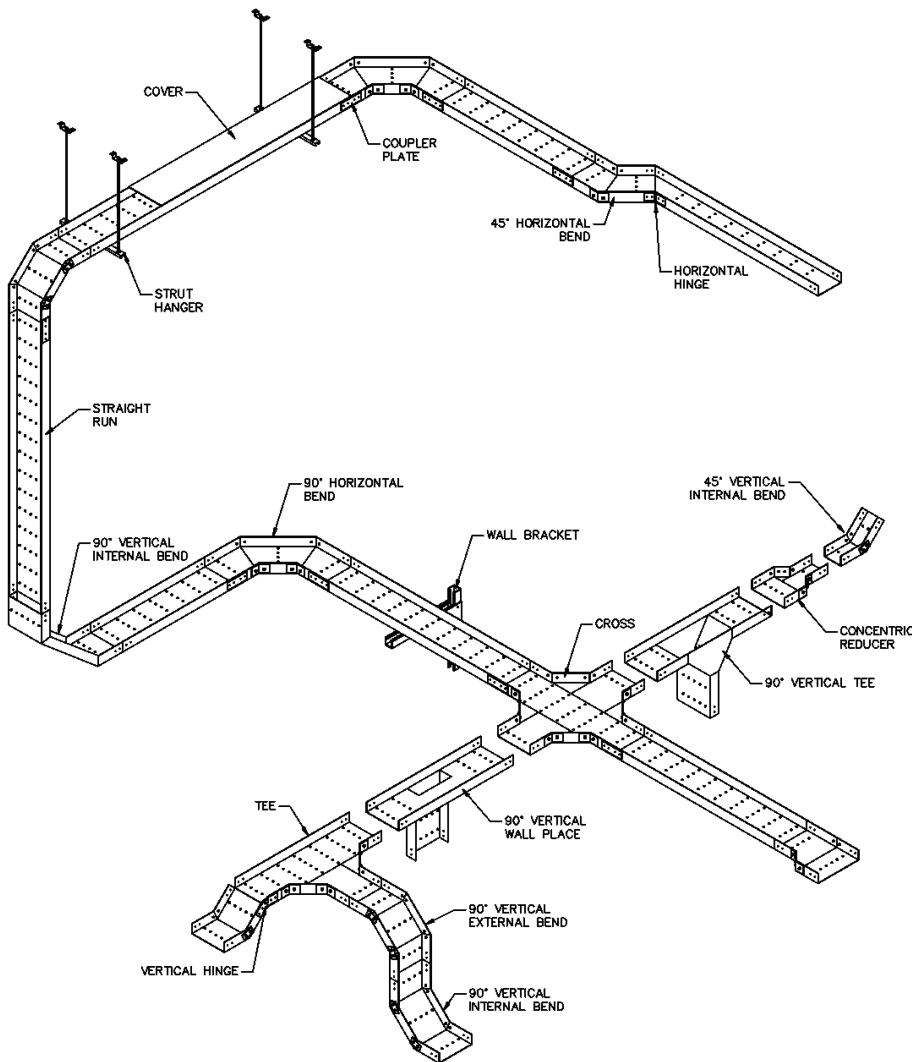




JDA COMPOSITES

FIBERGLASS CABLE MANAGEMENT SYSTEM





About Us

JDA Composites is a world class specialist in manufacturing of Pultruded Glass Fibre and Carbon Fibre products to International specifications for Oil and Gas, Airports, Industrial, Waste Water, Marine, Railway, Defence and Civil applications for projects throughout the world.

We are the one stop shop for all your requirements in the field of fibre glass cable trays, gratings, hand rails, ladders, lighting poles, trench covers and structural Supports, optimizing design in order to reduce cost, speed order processing and expedite delivery.

Our experienced team of manufacturing, technical, quality and material control specialists ensures that all exacting project requirements are met.

Specialized in cable management system JDA provides you with complete solutions for your cable support system including the following:

- GRP cable ladders and accessories for power cables.
- GRP cable trays and accessories for instrument cables and tubes.
- GRP support system for cable ladders and trays.

Quality Control

JDA Composites is ISO 9001 accredited company.

JDA GRP products are manufactured under strict quality system monitoring quality at each stage of production by a separate QC department. In house testing is done for stringent flammability tests and load test as per international standards. Test reports from independent reputed testing agencies are also available. Third party inspections are also being regularly conducted.



Consultant's Approval

- EIL
- AECOM
- KEO CONSULTANTS
- SSH CONSULTANTS KUWAIT
- NPCIL
- NTPC
- PDIL
- CONSULTING ENGINEERING SERVICES
- UHDE INDIA LTD.
- CHEMTEX
- STORK ENGINEERS
- MECON
- HUMPHREYS & GLASGOW
- KVAERNER POWER GAS
- KVAERNER PROCESS
- PROJECTS & DEVELOPMENT

Contractors

- SNC LAVALIN
- TECHNIP
- MC DERMOTT MIDDLE EAST
- L&T
- NPCC-UAE
- ALSTOM
- CCC
- SUEZ
- DOOSAN
- HONEYWELL
- SIEMENS
- ABB
- YOKOGAWA
- BECHTEL
- HYUNDAI HEAVY IND.
- TECNICAS REUNIDAS
- SAMSUNG
- HYOSUNG
- SICON
- BHEL
- TOYO

End Users

- ADNOC
- RIYADH METRO-ALSTOM
- ONGC
- QATAR PETROLEUM, QATAR GAS
- SABIC
- BRITISH GAS
- KUWAIT OIL COMPANY
- MUMBAI MUNICIPALITY (BMC)
- HPCL, BPCL, IOCL, KRL, RELIANCE REFINERIES
- SEWA (SHARJAH ELECTRICITY & WATER AUTHORITY)
- NTPC
- NPCIL, BARC
- NIPP- NIGERIA
- MAERSK OIL QATAR
- SOUTHERN RAILWAYS

- CMWSS (CHENNAI METRO WATER & SEWAGE)
- TAKREER
- ALBA BAHRAIN
- DRDO
- PETRONAS- MALAYSIA
- SOUTH PARS GAS DEVELOPMENT FIELD- IRAN
- RVNL
- BMWSS (BANGALORE METRO WATER & SEWAGE)

Applications

- Offshore platforms
- Coastal installations
- Chemical plants
- Refineries & fertilizers
- Food & drug industry
- Railways & tunnels
- Metallurgical plants
- ETP and utilities
- Marine applications
- Power plants



GRP cable ladder at onshore applications



GRP cable ladder and trays on offshore



HRC offshore platform - 1997



Chennai Refinery - Jetty - 2007



Desalination plant - Chennai

Benefits of using FRP/GRP cable trays

CORROSION RESISTANT

JDA GRP cable trays have excellent corrosion resistance to most of the corrosive atmospheres in particular to saline conditions found in offshore and marine environment.

EASY TO INSTALL

Light in weight it takes much less time and labor to install GRP cable trays compared to other materials. Fibre glass being easy to cut and drill, site modification on routing becomes very easy.

FIRE RETARDANT

It meets class 1, very low flammability criterion as per BS-476 part 7 and part 6 surface spread of flame. It also meets ASTM-D635, UL-94 V0 flammability tests. Low smoke, zero halogen, anti-static and self extinguishing versions of JDA trays are safe in hazardous areas.

LONG LIFE

JDA products are made from UV Resistant resins and are covered with polyester surfacing veils providing excellent UV resistance and chemical resistance imparting maintenance free long life.

HIGH STRENGTH

Suitable for heavy power cable loads meeting NEMA-FG1-1993, American specification for fibre glass cable ladders.

LOW CONDUCTIVITY

The low heat and electrical conductivity of GRP means that the effect of fire is localized. GRP is non-conductive and non-sparking thus can be installed with confidence in any hazardous or corrosive environment.



GRP cable ladders for power cables

CODE	SIDE RUNNER (H)	NEMA LOAD CLASS75	DUTY
CBL-75-W	75	8A/ 6B	LIGHT DUTY
CBL-100-W	100	10A/ 8B/ 6C	MEDIUM DUTY
CBLH-150-W	150	8C/ 10B/ 12C/ 20C	HEAVY DUTY
CBLH-160E-W	160	10C/ 12B/ 20A	HEAVY DUTY
CBLH-200-W	200	20C	EXTRA HEAVY DUTY

Substitute “W” by width of tray while ordering.
H: Height of cable ladder.

WORKING ALLOWABLE LOAD (Kg/m)					
SUPPORT SPAN	CBL-75-W	CBL-100-W	CBLH-150-W	CBLH-160E-W	CBLH-200-W
6m	-	-	-	75	150
4m	-	-	75	110	150
3m	-	75	110	150	-
2.5m	75	110	150	150	-
2m	110	150	150	150	-

NEMA Class: 6, 8, 10, 12, 20 are support spans in feet.
A: 50 lbs/ft (75 kg/m), B: 75 lbs/ft (110 kg/m), C: 100 lbs/ft (150 kg/m)

CBLH-160E-W

CBLH-200H

CBLH-150-W

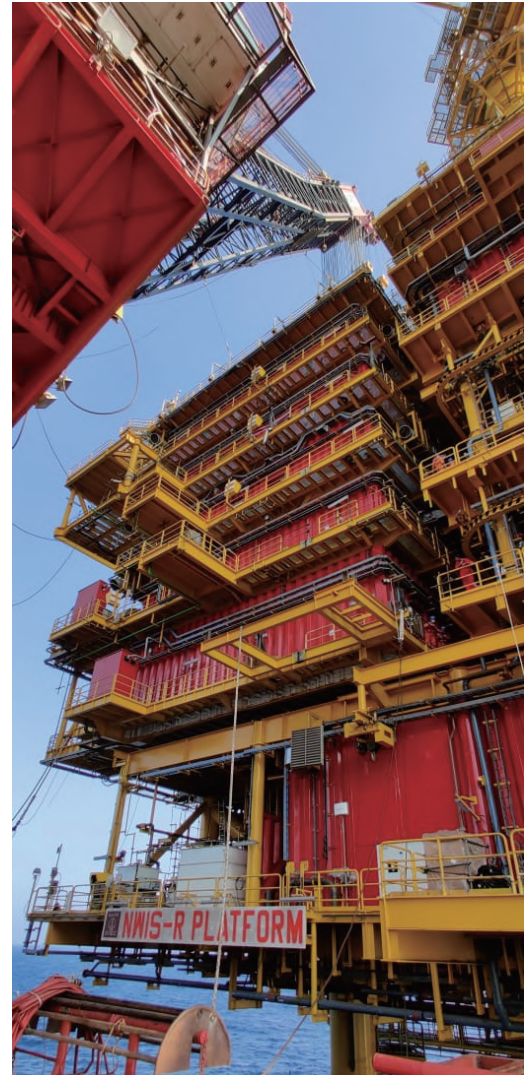
SPECIFICATIONS: MEETS EIL/ ASTM/ NEMA FGI/ IEC-61537/UL-568 STANDARDS	
PARAMETERS	SPECIFICATIONS
MATERIAL	UV resistant, corrosion resistant and fire retardant
RESIN	Polyester resin/ Vinyl ester resin/ Low smoke acrylate (MODAR) /Phenolic resin
FIRE RETARDANT	UL94V0, ASTM E-84, Class A, ASTM-D635, BS476 PART 6 & 7 CLASS-I & II, IS-6746
LENGTH	3 meters/ 6meters
WIDTH	150-1000 mm/ as required
RUNG CONSTRUCTION	GRP Square Tubes
RUNG SPACING	300/ 600/ 900 mm as desired
COUPLER PLATES	GRP/FRP with SS bolts/ SS coupler plate and bolts
RADIUS BENDS	300/ 600/ 900 mm
ANGLE OF BENDS	30°, 45°, 60°, 90°
ELECTROSTATIC	Static/ Antistatic
TEMPERATURE RESISTANCE	-60°C to 120°C
TOXICITY	Zero halogen
UV RESISTANCE	Yes for long outdoor life



Mesaieed Power Project Qatar



Bridge connecting offshore platforms - 1998



ONGC NWIS Offshore Platform - 2021



Kochi Refinery - 2002

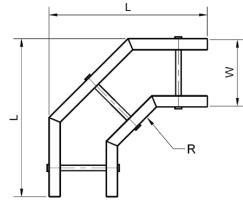


Chennai Refinery - 2007

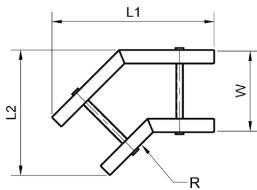


Accessories for cable ladders 75H & 100H

LADDER TYPE HORIZONTAL 90° BEND		
SIZE	L(300R)	L(600R)
100W	515	785
150W	565	835
200W	615	885
300W	715	985
400W	815	1085
450W	865	1135
500W	915	1185
600W	1015	1285
700W	1115	1385
750W	1165	1435
800W	1215	1485
900W	1350	1585



90° HORIZONTAL BEND
Code: CBL-H-W-90°HB-R



45° HORIZONTAL BEND
Code: CBL-H-W-45°HB-R

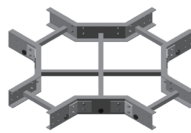
LADDER TYPE HORIZONTAL 45° BEND				
SIZE	300R		600R	
	L1	L2	L1	L2
100W	469	272	630	339
150W	505	322	665	389
200W	540	372	701	439
300W	611	472	772	539
400W	681	572	842	639
450W	717	622	878	689
500W	752	672	913	739
600W	823	772	984	839
700W	893	872	1054	939
750W	929	922	1090	989
800W	964	972	1125	1039
900W	1035	1072	1196	1139



90° HORIZONTAL BEND



45° HORIZONTAL BEND



CROSS



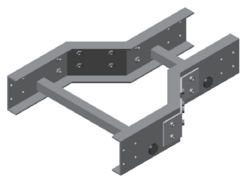
45° VERTICAL EXTERNAL BEND



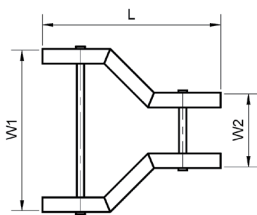
90° TEE



90° VERTICAL EXTERNAL BEND



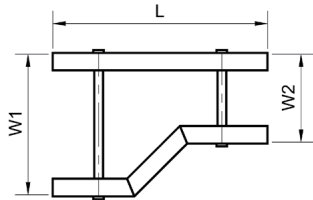
STRAIGHT REDUCER



Code: CBL-H-W1-W2-CR

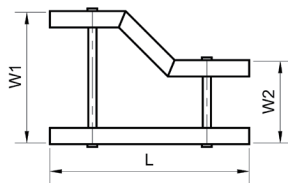
CONCENTRIC/STRAIGHT REDUCER

W1→ W2↓	1000	900	800	750	700	600	500	450	400	300	200
900	510	-	-	-	-	-	-	-	-	-	-
800	560	510	-	-	-	-	-	-	-	-	-
750	585	535	-	-	-	-	-	-	-	-	-
700	610	560	510	-	-	-	-	-	-	-	-
600	660	610	560	535	510	-	-	-	-	-	-
500	710	660	610	585	560	510	-	-	-	-	-
450	735	685	635	610	585	535	-	-	-	-	-
400	760	710	660	635	610	560	510	-	-	-	-
300	810	760	710	685	660	610	560	535	510	-	-
200	860	810	760	735	710	660	610	585	560	510	-
150	885	835	785	760	735	685	635	610	585	535	-



LH REDUCER

Code: CBL-H-W1-W2-LR/RR



RH REDUCER

LEFT HAND/RIGHT HAND REDUCER

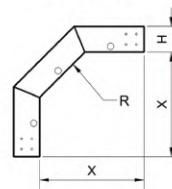
W1 → W2 ↓	900	800	750	700	600	500	450	400	300	200	150
800	560	-	-	-	-	-	-	-	-	-	-
750	610	510	-	-	-	-	-	-	-	-	-
700	660	560	510	-	-	-	-	-	-	-	-
600	760	660	610	560	-	-	-	-	-	-	-
500	860	760	710	660	560	-	-	-	-	-	-
450	910	810	760	710	610	510	-	-	-	-	-
400	960	860	810	760	660	560	510	-	-	-	-
300	1060	960	910	810	760	660	610	560	-	-	-
200	1160	1060	1010	910	860	760	710	660	560	-	-
150	1210	1110	1060	1010	910	810	760	710	610	510	-
100	1260	1160	1110	1060	960	860	810	760	660	560	510

90° VERTICAL BENDS

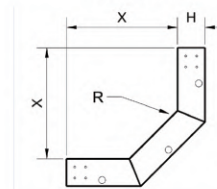
	300R	600R
X	405	675

Code: CBL-H-W-90°VB-EX/IN-R

EXTERNAL



INTERNAL

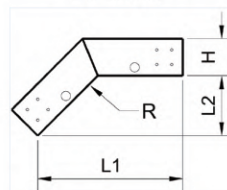


45° VERTICAL BENDS

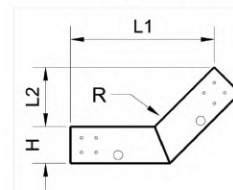
	300R	600R
L1	391	553
L2	162	229

Code: CBL-H-W-45°VB-EX/IN-R

EXTERNAL



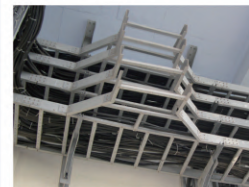
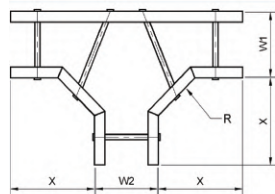
INTERNAL



EQUAL/UNEQUAL TEE

	300R	600R
X	409	679

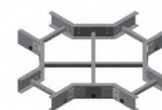
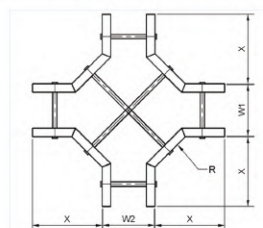
Code: CBL-H-W1-W2-T-R



EQUAL/UNEQUAL CROSS

	300R	600R
X	409	679

Code: CBL-H-W1-W2-X-R

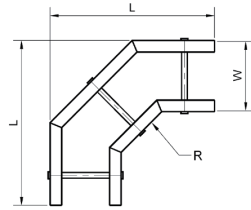


CROSS

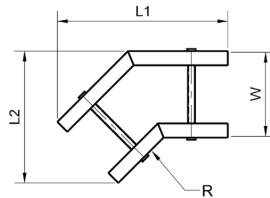


Accessories for cable ladders 150H, 160H & 200H

LADDER TYPE HORIZONTAL 90° BEND		
SIZE	L(300R)	L(600R)
150W	565	835
200W	615	885
300W	715	985
400W	815	1085
450W	865	1135
500W	915	1185
600W	1015	1285
700W	1115	1385
750W	1165	1435
800W	1215	1485
900W	1350	1585
1000W	1450	1685



90° HORIZONTAL BEND
Code: **CBL-H-W-90°HB-R**



45° HORIZONTAL BEND
Code: **CBL-H-W-45°HB-R**

LADDER TYPE HORIZONTAL 45° BEND				
SIZE	300R		600R	
	L1	L2	L1	L2
-				
150W	505	322	665	389
200W	540	372	701	439
300W	611	472	772	539
400W	681	572	842	639
450W	717	622	878	689
500W	752	672	913	739
600W	823	772	984	839
700W	893	872	1054	939
750W	929	922	1090	989
800W	964	972	1125	1039
900W	1035	1072	1196	1139
1000W	1106	1172	1266	1239

90° VERTICAL BENDS

	300R	600R
X	405	675

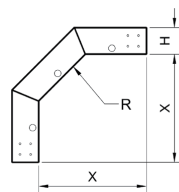
Code: **CBL-H-W-90°VB-EX/IN-R**

45° VERTICAL BENDS

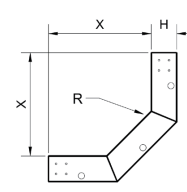
	300R	600R
L1	391	552
L2	162	229

Code: **CBL-H-W-45°VB-EX/IN-R**

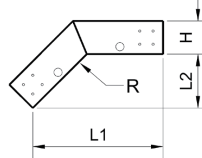
EXTERNAL



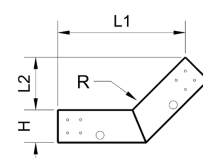
INTERNAL



EXTERNAL



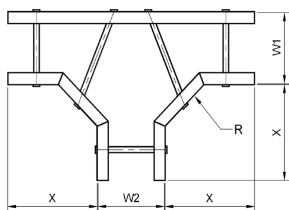
INTERNAL



EQUAL/UNEQUAL TEE

	300R	600R
X	405	675

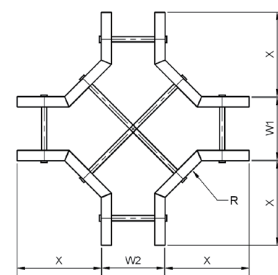
Code: **CBL-H-W1-W2-T-R**



EQUAL/UNEQUAL CROSS

	300R	600R
X	405	675

Code: **CBL-H-W1-W2-X-R**





GRP Instrumentation cable trays

JDA fiberglass channel type instrumentation tray is designed for light loads of individual wiring or pneumatic tubing. It is offered in solid or perforated construction. All straight sections and pre-assembled fittings are pre-drilled to accept splice plates. All splice plates and fasteners are separate order items.

Cable tray covers are recommended for those areas where the cable needs protection from falling object, adverse weather conditions, etc.

SPECIFICATIONS: MEETS EIL/ ASTM/ NEMA FGI/ IEC-61537/UL-568 STANDARDS	
PARAMETERS	SPECIFICATIONS
MATERIAL	UV resistant, corrosion resistant and fire retardant
RESIN	Polyester resin/ Vinyl ester resin/ Low smoke acrylate (MODAR) /Phenolic resin
FIRE RETARDANT	UL94V0, ASTM E-84, Class A, ASTM-D635, BS476 PART 6 & 7 CLASS-I &II, IS-6746
LENGTH	3 meters/ 6meters
WIDTH	50-750 mm pultruded
CONSTRUCTION	Perforated type/ Solid base
COLOR	Grey/ as desired
COUPLER PLATES	GRP/FRP with SS bolts/ SS coupler plate and bolts
RADIUS BENDS	300/ 600/ 900 mm
ANGLE OF BENDS	30°, 45°, 60°, 90°
ELECTROSTATIC	Static/ Antistatic
TEMPERATURE RESISTANCE	-60°C to 120°C
TOXICITY	Zero halogen
UV RESISTANCE	Yes for long outdoor life

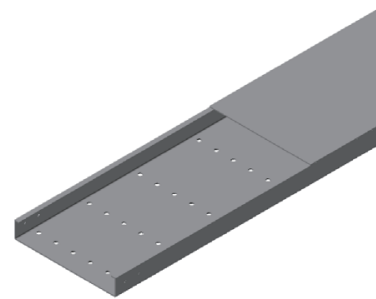
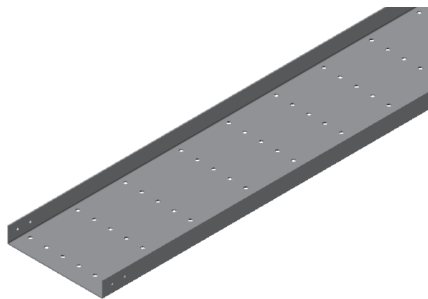
NOTE: We can provide custom made design & solution as per customer requirements.



JDA GRP cable ladder



JDA GRP cable tray



CABLE TRAY U CHANNEL TYPE		
CODE	SIZES WIDTH	CHANNEL SIZE W X H
CBT-5025	50	50X25
CBT-7528	75	75X28
CBT-10030	100	100X30
CBT-10040	100	100X40
CBT-10050	100	100X50
CBT-12030	120	120X30
CBT-15030	150	150X30
CBT-15040	150	150X40
CBT-15050	150	150X50
CBT-20050	200	200X50
CBT-25050	150	250X50
CBT-30050	300	300X50
CBT-40050	400	400X50

CABLE TRAY RETURN FLANGE TYPE		
CODE	SIZES WIDTH	CHANNEL SIZE W X H
CBTF-5025	50	50X25
CBTF-5030/5040/5050	50	50X30/40/50
CBTF-6025	60	60X25
CBTF-7550	75	75X50
CBTF-10050/ 10080	100	100X50/80
CBTF-100110	100	100X110
CBTF-15030/ 15050/ 15080	150	150X30/50/80
CBTF-150110	150	150X110
CBTF-20050/20080	200	200X50/80
CBTF-200110	200	200X110
CBTF-30030/ 30050/ 30080	300	300X30/50/80
CBTF-300100/ 300110	300	300X100/110
CBTF-40050/ 40080/ 400110	400	400X50/80/110
CBTF-45050/ 45080	450	450X50/80
CBTF-450110/ 450150	450	450X110/150
CBTF-50050/50080/500110	500	500X50/80/110
CBTF-60050/60080	600	600X50/80
CBTF-600110/600150	600	600X110/150
CBTF-750150	750	750X150

Loading: Instrumentation cable trays are meant only for light instrument cables or pneumatic tubing loads. Recommended support span is 1.5m. For larger span or heavy loads contact us.

Accessories for perforated & solid bottom cable trays



90° TEE



90° VERTICAL TEE



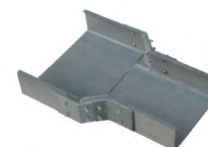
90° HORIZONTAL BEND



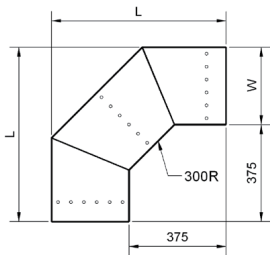
90° VERTICAL INTERNAL BEND



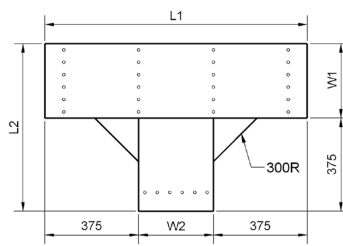
90° VERTICAL EXTERNAL BEND



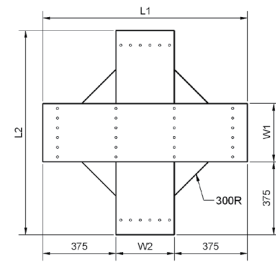
CONCENTRIC REDUCER



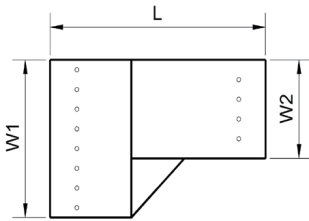
90° HORIZONTAL BEND
Code: CBT/CBTF-H-W-90°HB-R



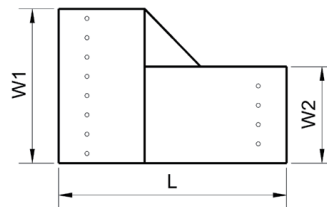
EQUAL/UNEQUAL TEE
Code: CBT/CBTF-H-W1-W2-T-R



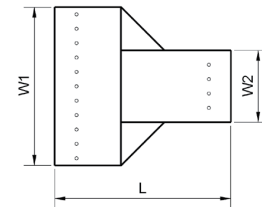
EQUAL/UNEQUAL CROSS
Code: CBT/CBTF-H-W1-W2-X-R



LH REDUCER
Code: CBT/CBTF-H-W1-W2-LR



RH REDUCER
Code: CBT/CBTF-H-W1-W2-RR



CONCENTRIC REDUCER
Code: CBT/CBTF-H-W1-W2-CR

LH/RH REDUCER

W1→ W2↓	600	500	400	300	200	150	100
500	500	-	-	-	-	-	-
400	600	500	-	-	-	-	-
300	700	600	500	-	-	-	-
200	800	700	600	500	-	-	-
150	850	750	650	550	450	-	-
100	900	800	700	600	500	450	-
50	950	850	750	650	600	500	450

CONCENTRIC REDUCER

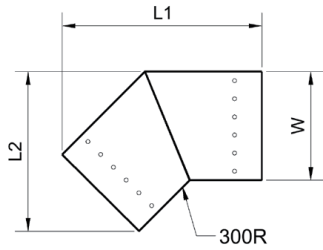
W1→ W2↓	600	500	400	300	200	150	100
500	450	-	-	-	-	-	-
400	500	450	-	-	-	-	-
300	550	500	450	-	-	-	-
200	600	550	500	450	-	-	-
150	625	575	525	475	-	-	-
100	650	600	550	500	450	-	-
50	675	625	575	525	475	450	-



Qatar Petroleum - Halul Project

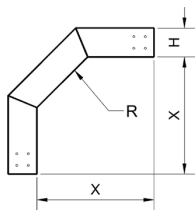


Instrumentation cabinet

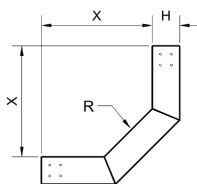


HORIZONTAL 45° BEND
Code: CBT/CBTF-H-W-45°HB-R

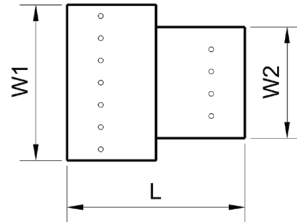
HORIZONTAL 45° BEND		
SIZE	L1	L2
50W	376	191
100W	411	241
150W	446	291
200W	482	341
250W	518	391
300W	552	441
400W	623	541
500W	694	641
600W	765	741



90° EXTERNAL BEND
Code: CBT/CBTF-H-W-90°VB-EX-R

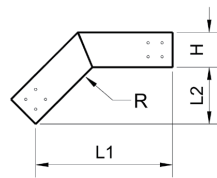


90° INTERNAL BEND
Code: CBT/CBTF-H-W-90°VB-IN-R



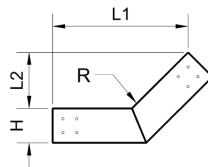
DIRECT STRAIGHT REDUCER
Code: CBT/CBTF-H-W1-W2-DR

DIRECT STRAIGHT REDUCER	
W1	W2
100	50
150	100
200	150
300	250
450	400
500	450



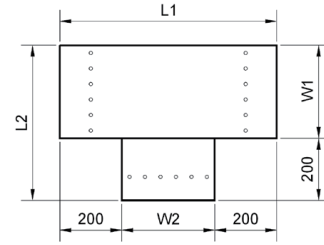
45° EXTERNAL BEND
Code: CBT/CBTF-H-W-45°VB-EX-R

L1=341
L2=141



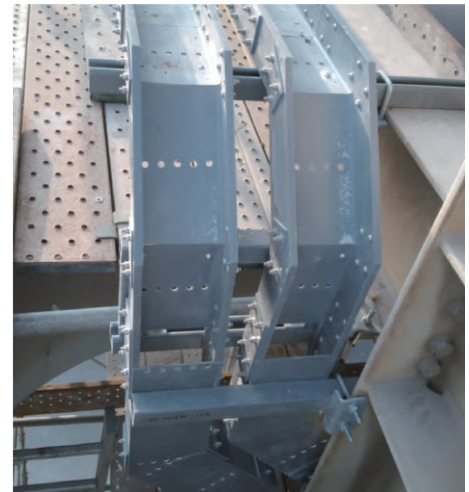
45° INTERNAL BEND
Code: CBT/CBTF-H-W-45°VB-IN-R

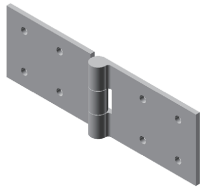
L1=341
L2=141



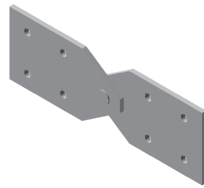
DIRECT TEE
Code: CBT/CBTF-H-W1-W2-DT

L1=W2+400
L2=W1+200

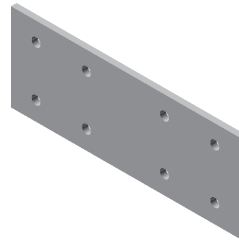




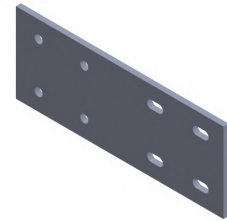
HORIZONTAL HINGE
Code: CBL/CBLh-H-HH



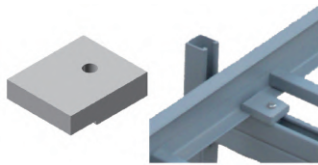
VERTICAL HINGE
Code: CBL/CBLh-H-VH



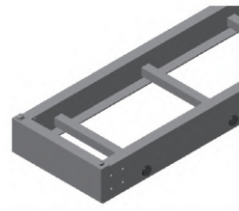
GRP COUPLER
Code: CBL/CBLh-H-CP



GRP EXPANSION
COUPLER PLATE
Code: CBL/CBLh-H-ECP



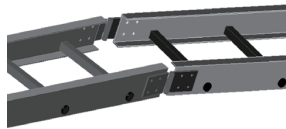
HOLD DOWN CLAMP
Code: CBL/CBLh-HD



END CAP
Code: CBL/CBLh/CBT/CBTF-H-W-EC



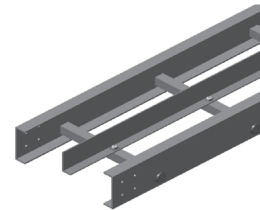
END CAP
Code: CBL/CBLh/CBT/CBTF-H-W-EC



HORIZONTAL
VARIABLE ANGLE

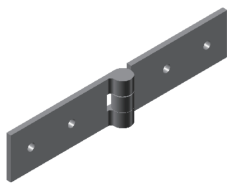


ARTICULATED RISER

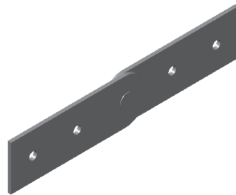


DIVIDER STRIP
Code: CBL/CBLH-H-DS

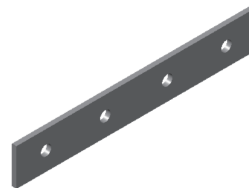
Accessories for instrumentation cable trays



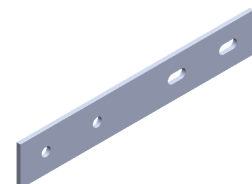
GRP HORIZONTAL HINGE
Code: CBT/CBTF-H-HH



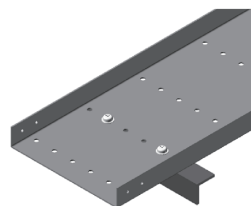
GRP VERTICAL HINGE
Code: CBT/CBTF-H-VH



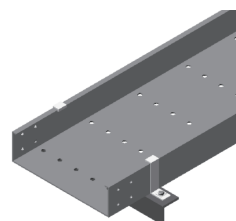
GRP COUPLER PLATE
Code: CBT/CBTF-H-CP



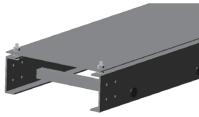
GRP EXPANSION
COUPLER PLATE
Code: CBT/CBTF-H-ECP



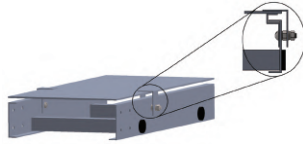
DIRECT FIXING TRAY
Code: CBT/CBTF-HD-BN



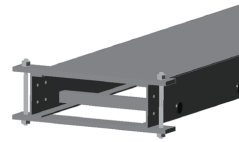
J-TYPE HOLD DOWN CLAMP
Code: CBT/CBTF-HDJ-H



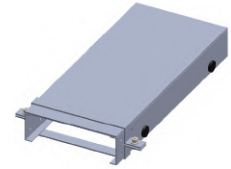
VENTILATED COVER WITH FIXING BOLT
Code: CBL/CBLh/CBTF-W-RCOV-B



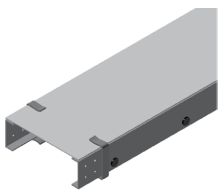
VENTILATED COVER WITH FIXING CLIP
Code: CBL/CBLh/CBTF-W-RCOV



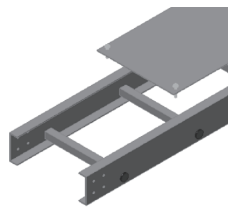
HEAVY DUTY CLAMP 1
Code: CBL/CBLh/CBTF-H-W-COV-HDC1



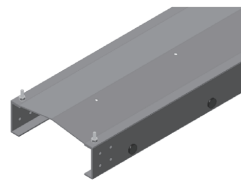
HEAVY DUTY CLAMP 2
Code: CBL/CBTF-H-W-COV-HDC2



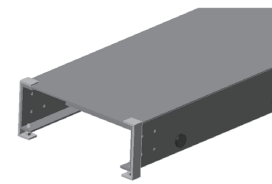
PUSH FIT COVER CLAMP
Code: CBOV-PF-H



GRP COVER WITH STANDARD - SS SELFTAPPING SCREWS
Code: CBL/CBLh/CBTF-W-COV



PEAKED COVER
Code: CBL/CBLh/CBTF-W-PCOV



PUSH FIT HEAVY DUTY COVER CLAMP
Code: CBOV-PFB-H

How to order

(A) STRAIGHT RUN TRAY TYPE HEIGHT WIDTH

Heavy duty cable ladder of 600mm width

Example: CBLh 150H 600W

(B) TEE TRAY TYPE HEIGHT WIDTH 1 WIDTH 2 PART RADIUS

Cable tray return flange unequal tee 600 x 300 of 300 radius

Example: CBTF 80H 600W1 300W2 T 300R

(C) BEND TRAY TYPE HEIGHT WIDTH ANGLE BEND TYPE RADIUS

Cable ladder of 90° vertical inside bend of 600mm radius

Example: CBL 100H 300W 90° VB-IN 600R

(D) COVER TRAY TYPE HEIGHT WIDTH ANGLE BEND TYPE RADIUS COV

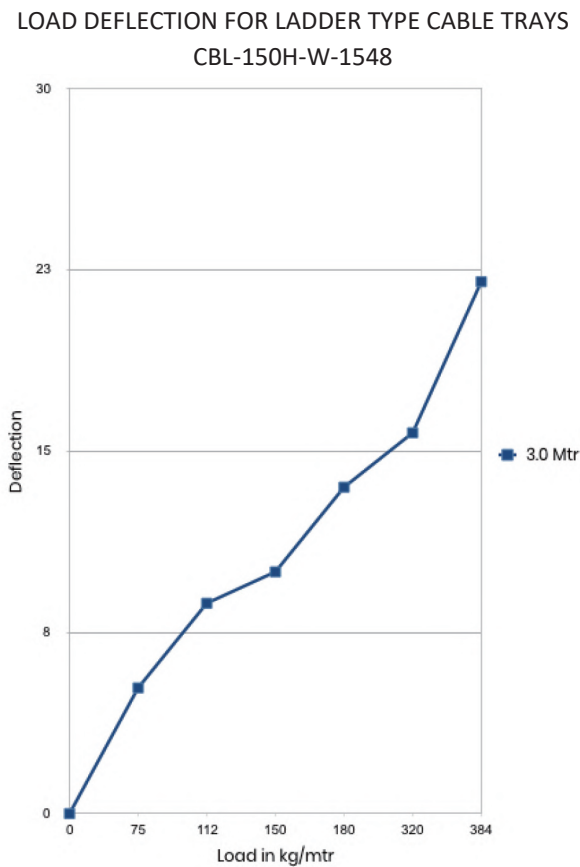
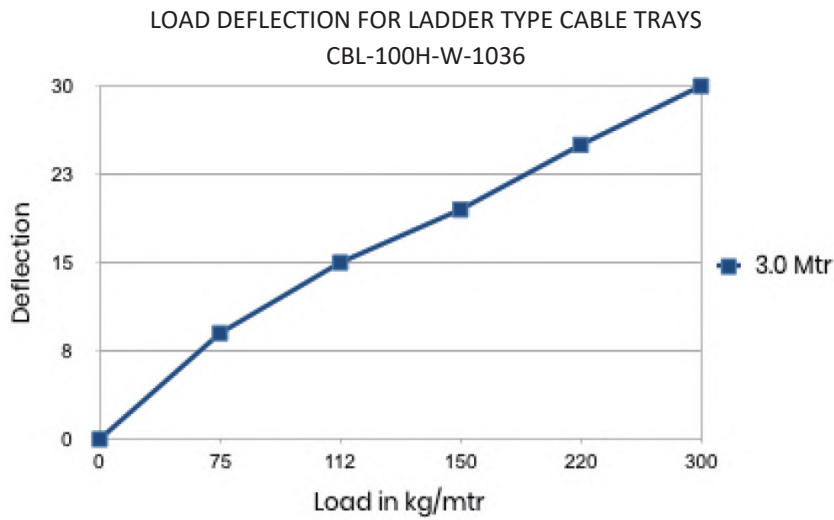
Cover for cable ladder of 45° horizontal bend of 300mm radius

Example: CBTF 50H 150W 45° HB 300R COV

NOTE: All dimensions are within +/- 6mm tolerance



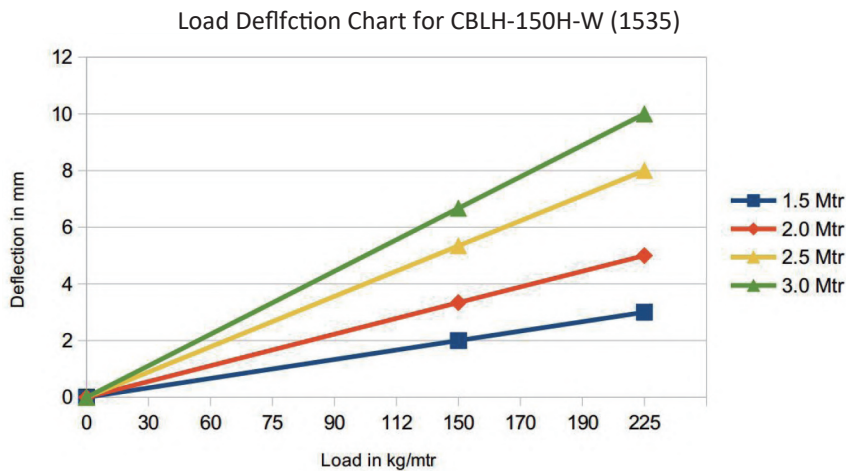
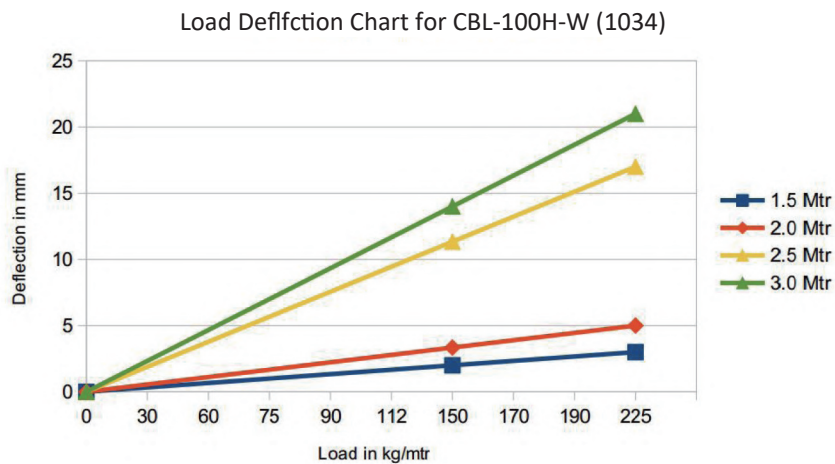
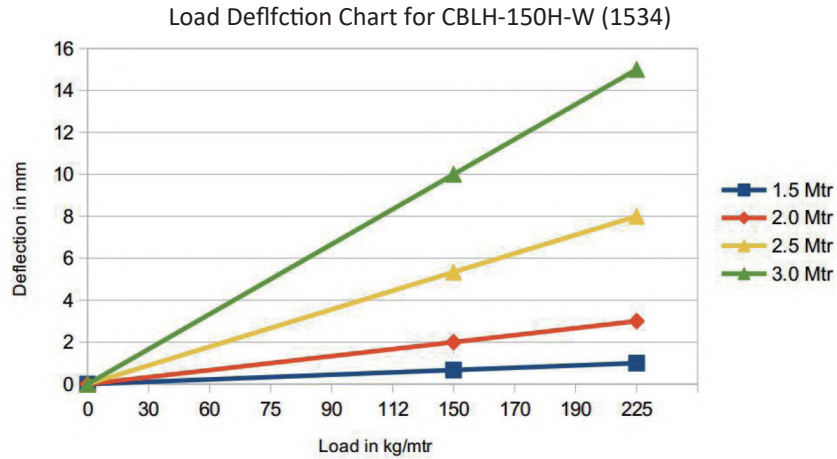
Load v/s deflection for cable ladder
Cable ladder - Test procedure NEMA - FG1



NOTE: Above max. load marked is not breaking load, it is load as per standards for NEMA class rating with 1.7 times safety factor, or max. load the tray volume can fill. Breaking loads are much lighter.



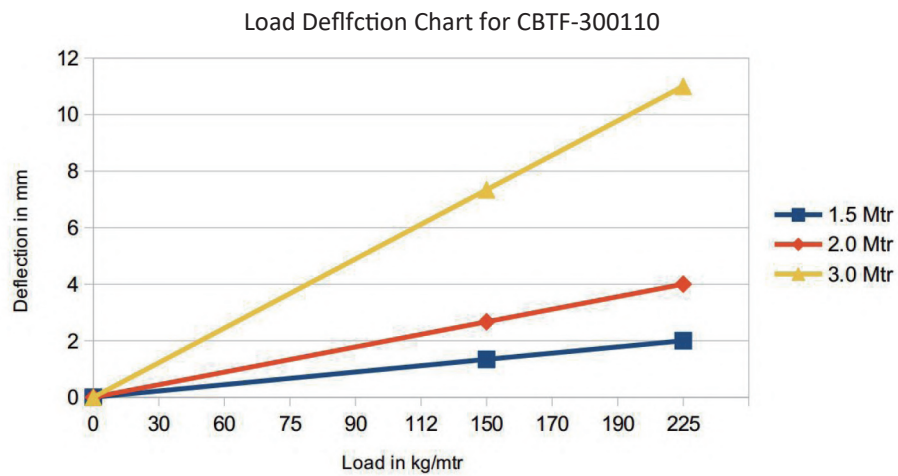
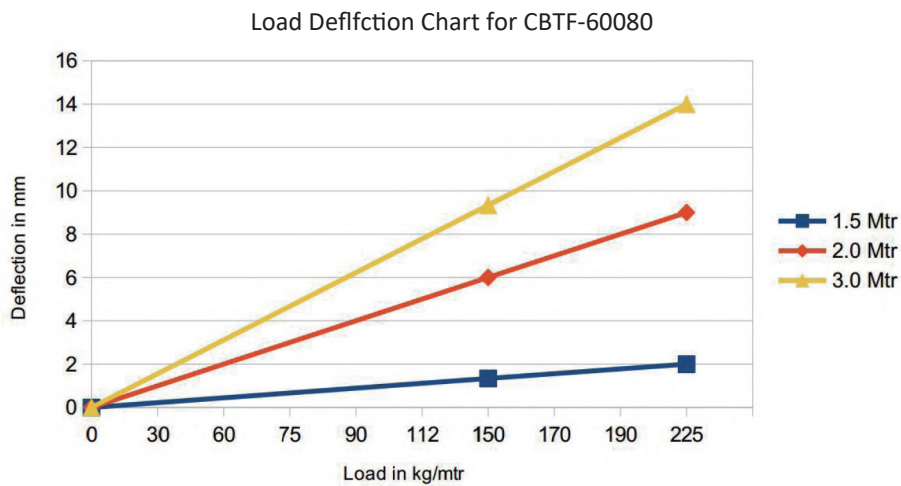
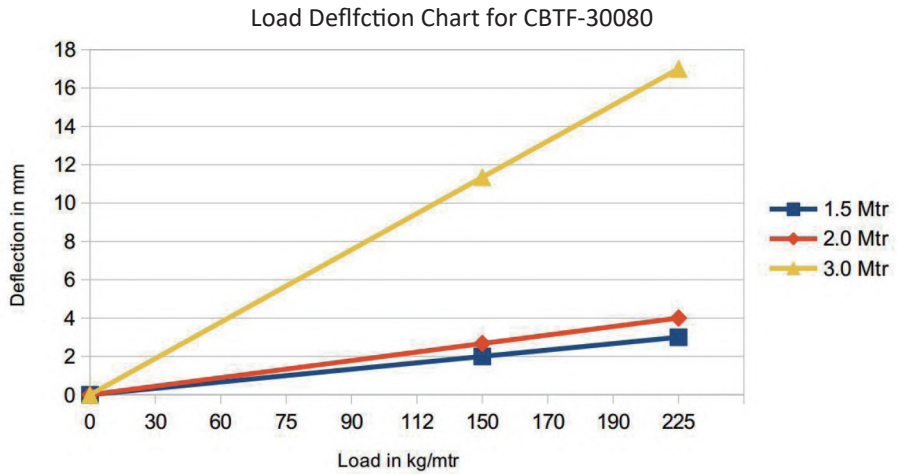
Cable Ladder - Test procedure NEMA - FG1



NOTE: Above max. load marked is not breaking load, it is load as per standards for NEMA class rating with 1.7 times safety factor, or max. load the tray volume can fill. Breaking loads are much lighter.



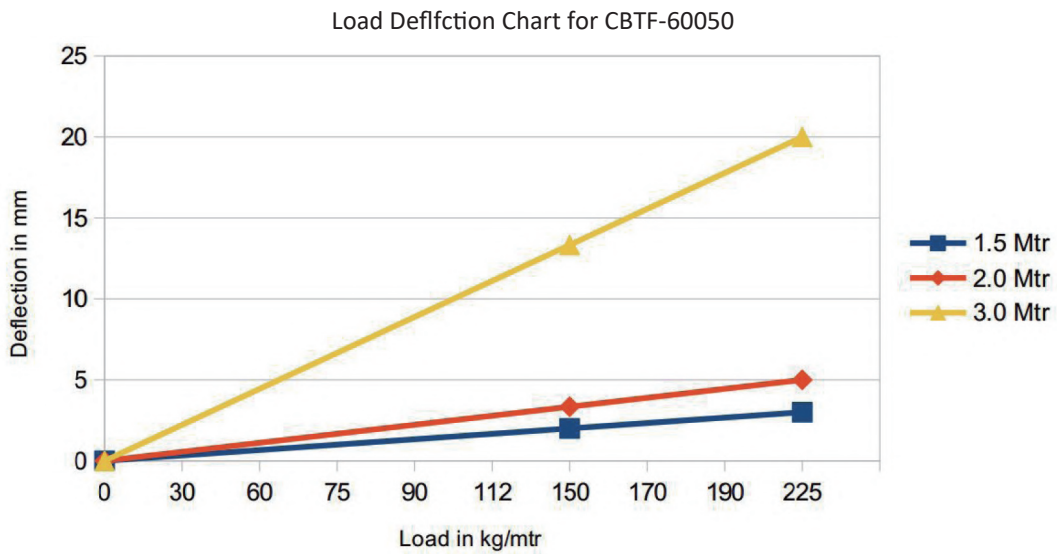
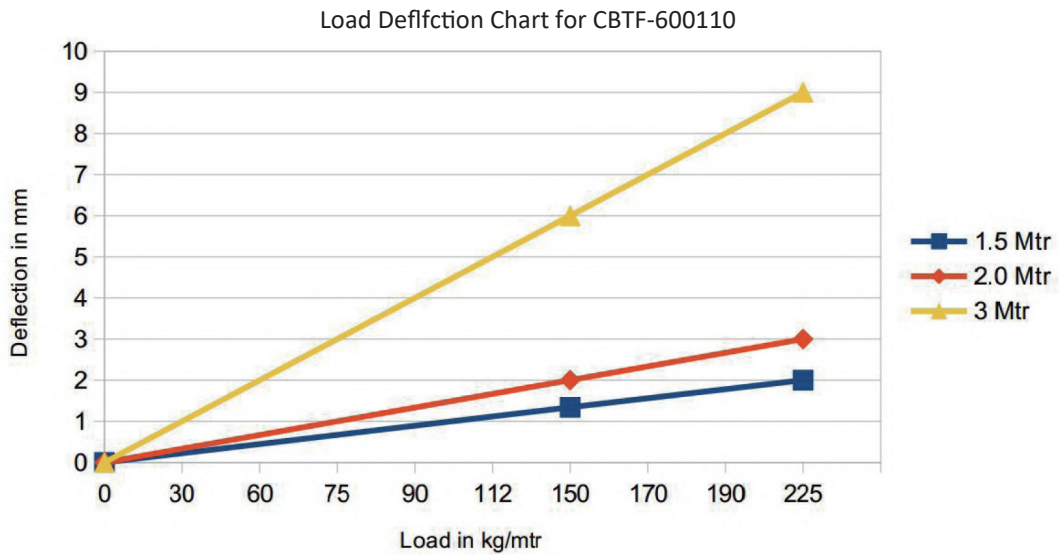
Cable Tray - Test procedure NEMA - FG1



NOTE: Above max. load marked is not breaking load, it is load as per standards for NEMA class rating with 1.7 times safety factor, or max. load the tray volume can fill. Breaking loads are much lighter.



Cable Tray - Test procedure NEMA - FG1

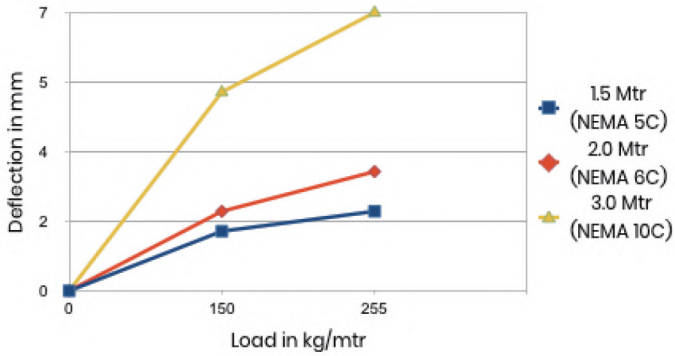


NOTE: Above max. load marked is not breaking load, it is load as per standards for NEMA class rating with 1.7 times safety factor, or max. load the tray volume can fill. Breaking loads are much lighter.

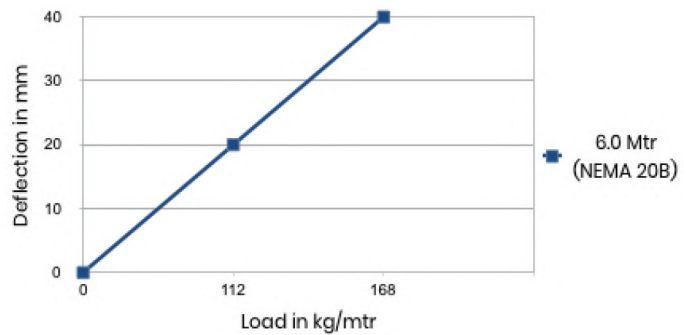


Cable ladder load test - IEC 61537

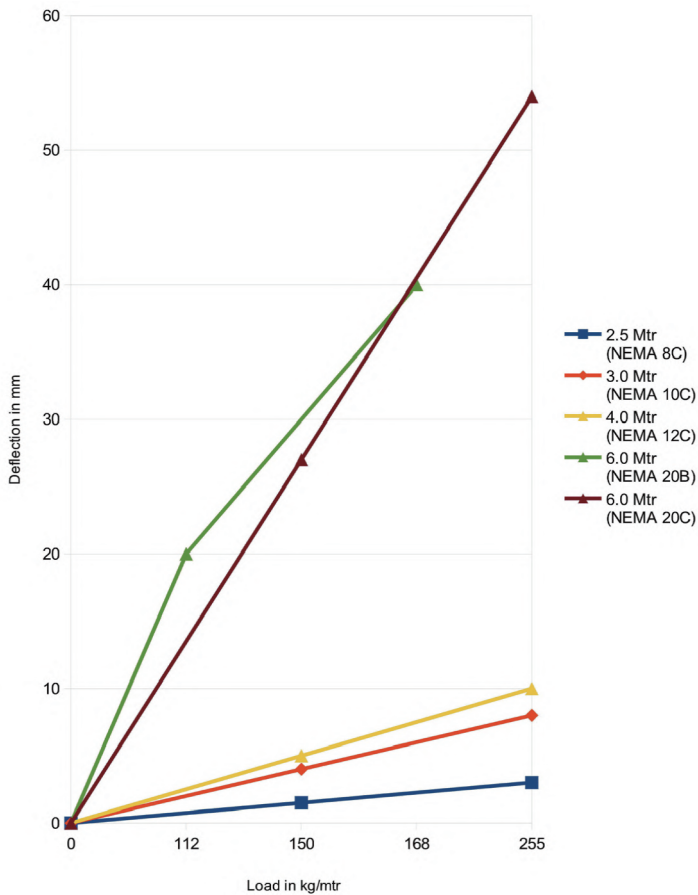
Load Deflection for Ladder Type Cable Trays
(CBL-100H-W-1036)



Load Deflection for Ladder Type Cable Trays
(CBL-150H-W-1546)



Load Deflection for Perforated Cable Ladder CBLH-150H-W (1546)

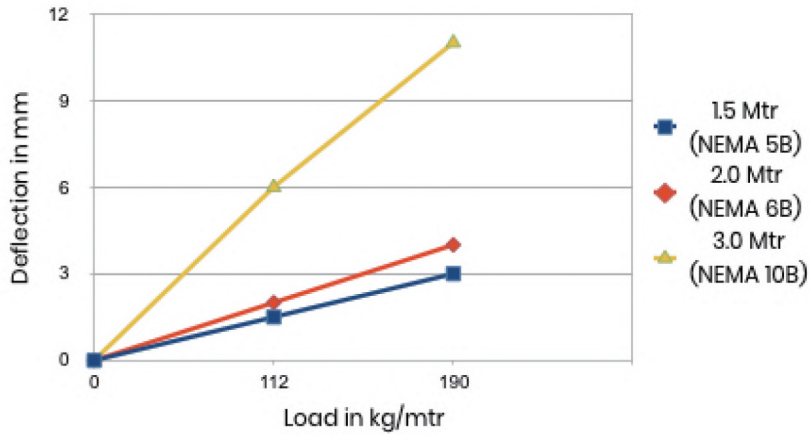


NOTE: Above max. load marked is not breaking load, it is load as per standards for NEMA class rating with 1.7 times safety factor, or max. load the tray volume can fill. Breaking loads are much lighter.

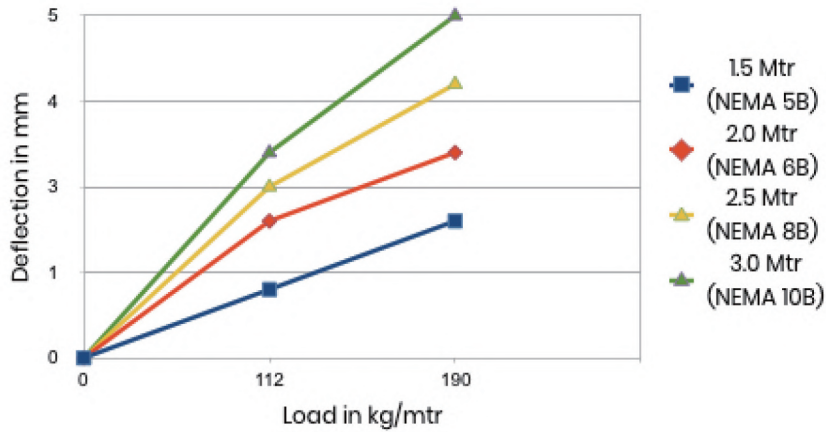


Load test on perforated cable trays - IEC 61537

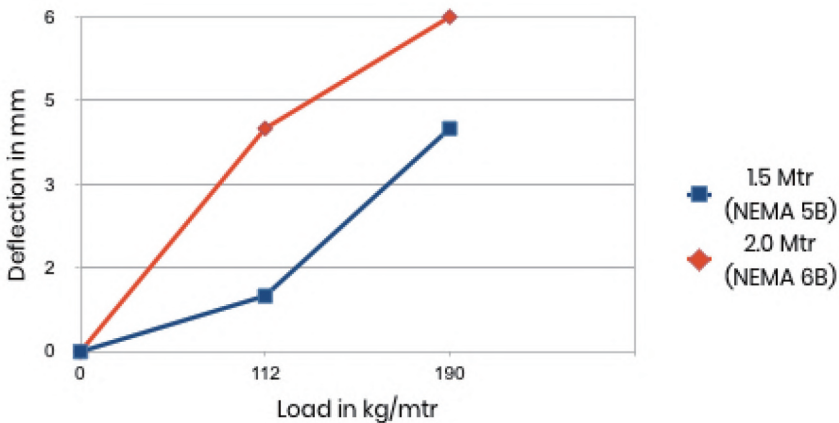
Load Deflection for Perforated Cable Trays
300mmWx110mmH CBTF-300110



Load Deflection for Perforated Cable Trays
600mmWx80mmH CBTF-60080



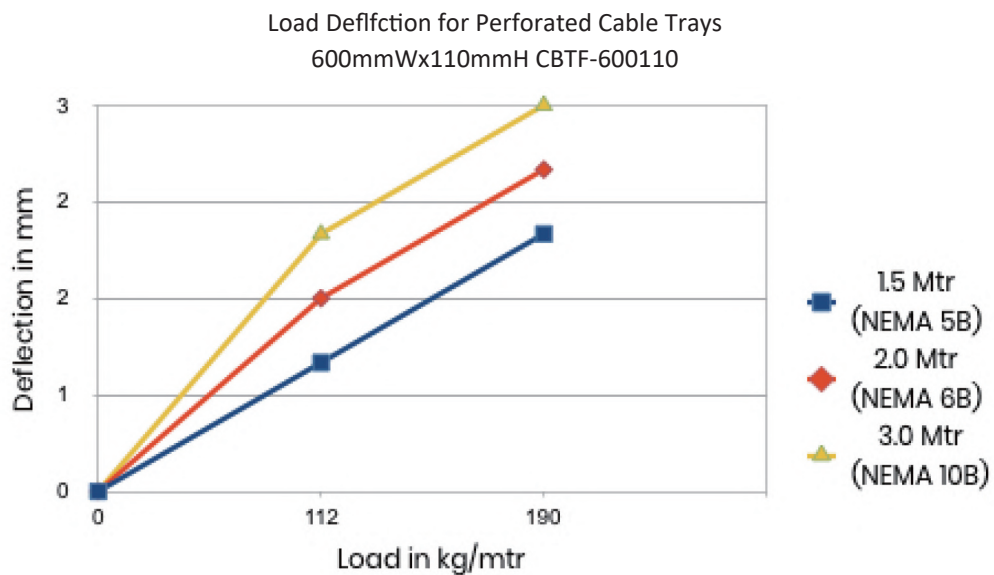
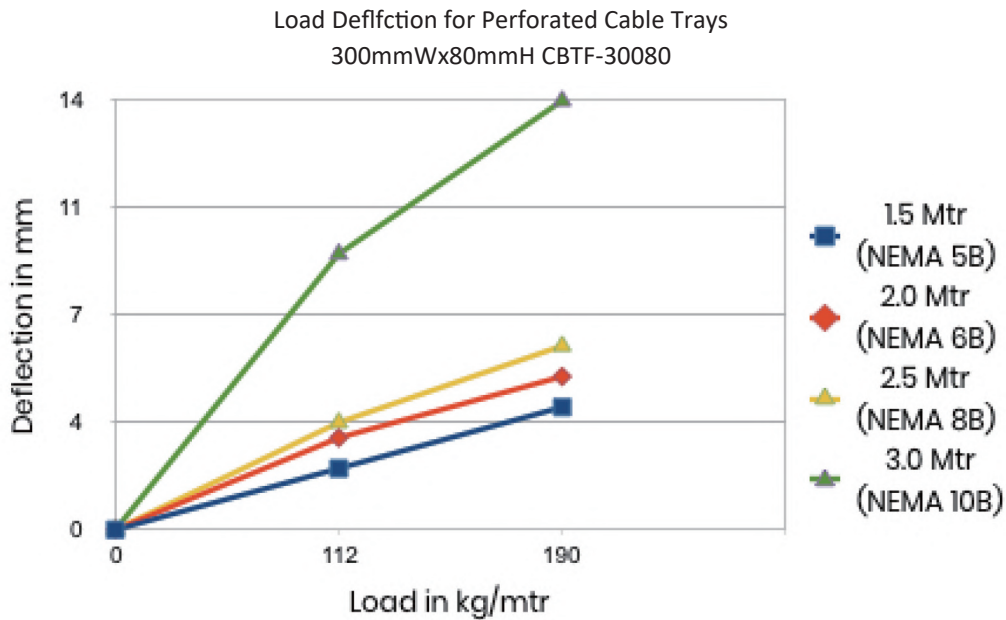
Load Deflection Chart for CBTF-30050



NOTE: Above max. load marked is not breaking load, it is load as per standards for NEMA class rating with 1.7 times safety factor, or max. load the tray volume can fill. Breaking loads are much lighter.



Load test on perforated cable trays - IEC 61537



NOTE: Above max. load marked is not breaking load, it is load as per standards for NEMA class rating with 1.7 times safety factor, or max. load the tray volume can fill. Breaking loads are much lighter.



Loading on perforated cable trays

Instrumentation cable trays are meant only for light instrument cables or pneumatic tubing loads. Recommended support span is 1.5m.

Technical support

JDA Composites provides full support to the client as regards to material specification, designing, installation guidance, documentation, inspection, packing, shipping and everything that's required to ensure trouble free supply of the required products to the project site. From identifying and overcoming the problems through the modifications in design and specification to delivery and installation, all of our operatives are systematically and thoroughly trained.

Chemical resistance

Isophthalic Polyester Resin: For most of the general applications

Vinyester Resin: Recommended for severe corrosive atmospheres

NOTE: For specific chemical resistance please contact us.

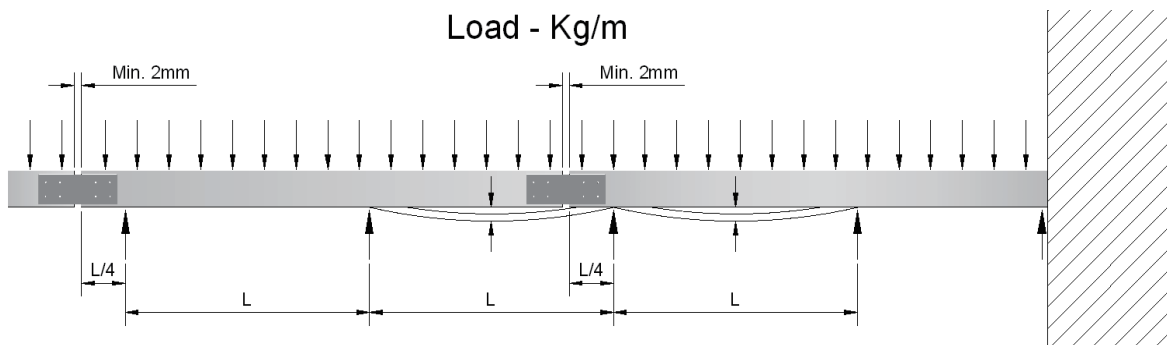
NOTE: GRP & FRP are two nomenclature for the same fibre glass cable trays & ladders

Installation instructions

REFERENCE: NEMA-FG1

Support must be located such that the coupler plates are at the quarter point of the span. For example, if the support span is 3m, the quarter point is 750mm from the support. In a continuous beam configuration, the bending moment in the tray side rail is minimum at points located approximately 1/4 of the span from each tray support. Thus there will be minimum stress on coupler plate if joint is located at 1/4 of span. For bends and other fittings the supports should be within 2 feet of each fitting extremity and one support must be located between the centre member of the fittings. For 3m length of cable tray/ladders 2.5m support span is not recommended and for 6m length of cable tray/ladder, 5m support span is not recommended. If these spans are fixed then change the length of the tray/ladder to 2.5m and 5m respectively.

Location of supports





Types of supports



LIGHT DUTY STRUT
Code: **LDS-1-W**
(W=50-300)



MEDIUM DUTY STRUT SUPPORT
Code: **MDSS-3-W**
(W=50-600)



HEAVY DUTY STRUT BRACKET SUPPORT
Code: **HDBS-4-W**
(W=300-1000)



GRP STUD & STRUT HANGER SUPPORT
Code: **GSHS-1-W**
(W=50-1000)

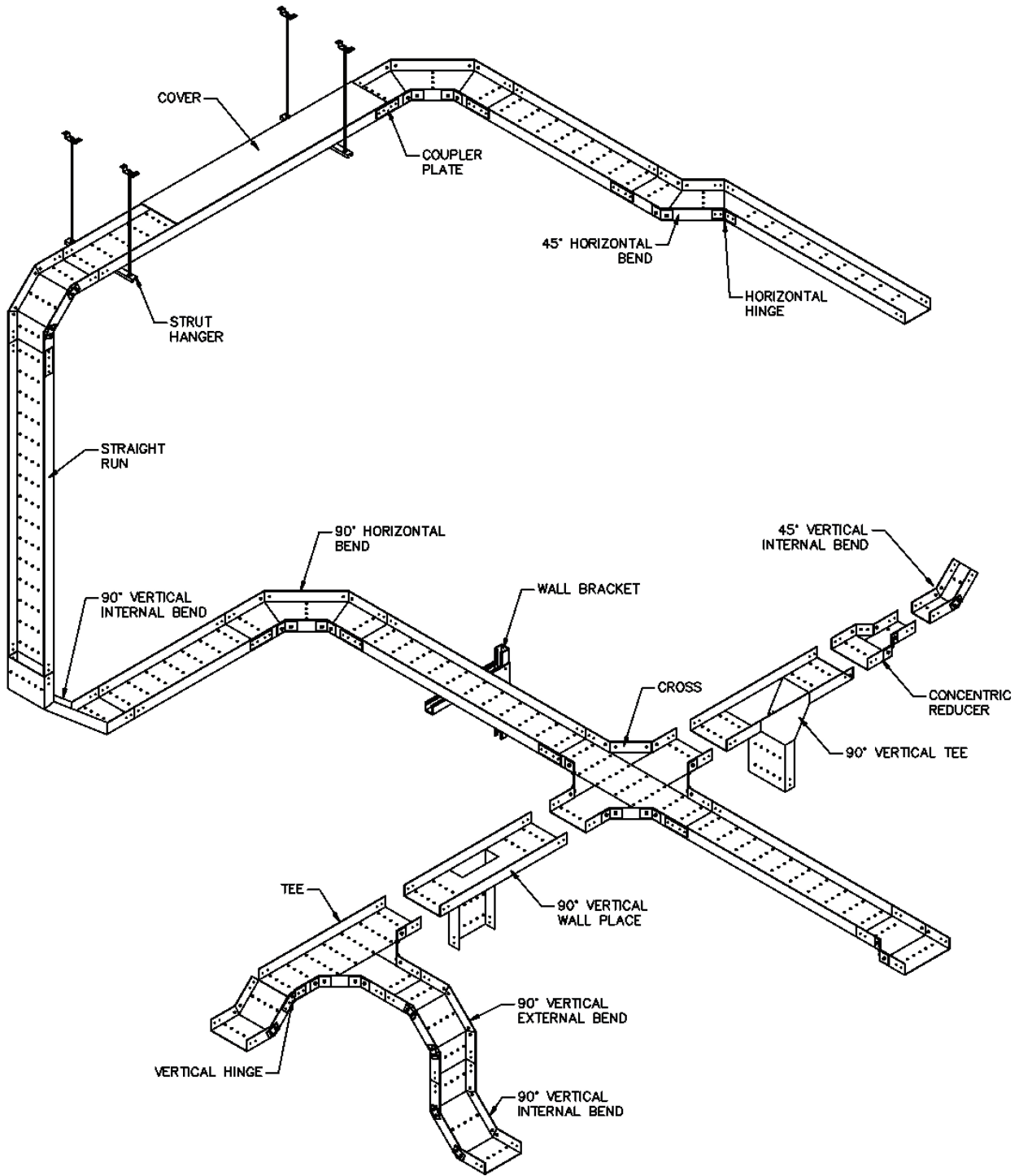


HEAVY DUTY DOUBLE SUPPORT
Code: **HDDS-5-W**
(W=300-1000)



LIGHT DUTY GROUTABLE STRUT
Code: **LDGS-2-W**
(W=50-300)


NOTE: For more details on GRP supports please contact for detailed catalogue of supports





日燭科技有限公司
JD Auspice Co., Ltd.



 www.jdauspice.com



 [@jdauspice](https://www.facebook.com/jdauspice)



 ID : @jdapv

